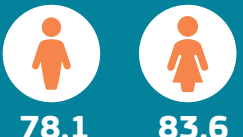
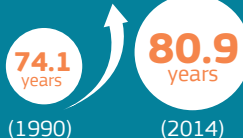


HEALTH AT A GLANCE: EUROPE 2016

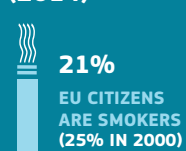
- STATE OF HEALTH IN THE EU CYCLE -

EFFECTIVE HEALTH SYSTEMS

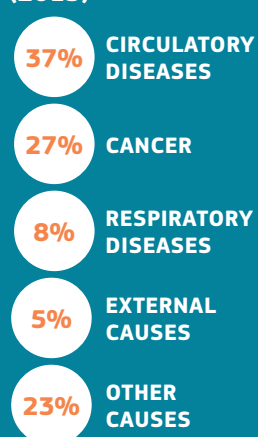
LIFE EXPECTANCY AT BIRTH



RISK FACTORS (2014)



MORTALITY CAUSES (2013)



PREMATURE DEATHS FROM CHRONIC DISEASES

555 000 PEOPLE OF WORKING AGE

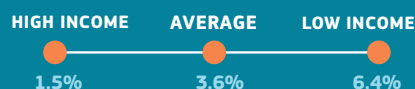


POLICY FOCUS

- REDUCE PREMATURE DEATHS
- REDUCE TOBACCO AND ALCOHOL USE, TACKLE OBESITY
- IMPROVE QUALITY OF ACUTE AND CHRONIC CARE

ACCESSIBLE HEALTH SYSTEMS

UNMET NEED FOR MEDICAL CARE DUE TO FINANCIAL CONSTRAINTS, DISTANCE OR TIME DELAYS



27% OF PATIENTS GO TO EMERGENCY DEPARTMENT BECAUSE PRIMARY CARE IS NOT AVAILABLE

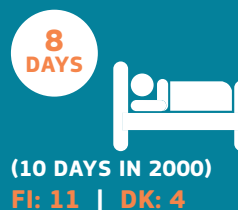
15% OF HEALTH SPENDING IS PAID DIRECTLY OUT-OF-POCKET BY PATIENTS

POLICY FOCUS

- REDUCE FINANCIAL BARRIERS TO HEALTHCARE
- STRENGTHEN ACCESS TO PRIMARY CARE
- REDUCE EXCESSIVE WAITING TIMES

RESILIENT HEALTH SYSTEMS

AVERAGE STAY IN HOSPITAL (2014)



POLICY FOCUS

- IMPROVE ORGANISATION OF HEALTHCARE SERVICES AND DEVELOP eHEALTH & mHEALTH
- IMPROVE EFFICIENCY IN HOSPITAL SECTOR AND PHARMACEUTICAL USE
- SUPPORT INNOVATION AND PROMOTE LONG-TERM INVESTMENT

HEALTH EXPENDITURE (PER CAPITA - 2015)

€ 6 023

LU

€ 2 781

EU

RO

€ 816

ANNUAL GROWTH RATE
2005-2009: +3.1%
2009-2015: +0.7%

Health at a Glance: Europe is the first step in the Commission's new State of Health in the EU cycle

COUNTRY HEALTH PROFILES (NOV. 2017)

COMMISSION PAPER (NOV. 2017)

VOLUNTARY EXCHANGES